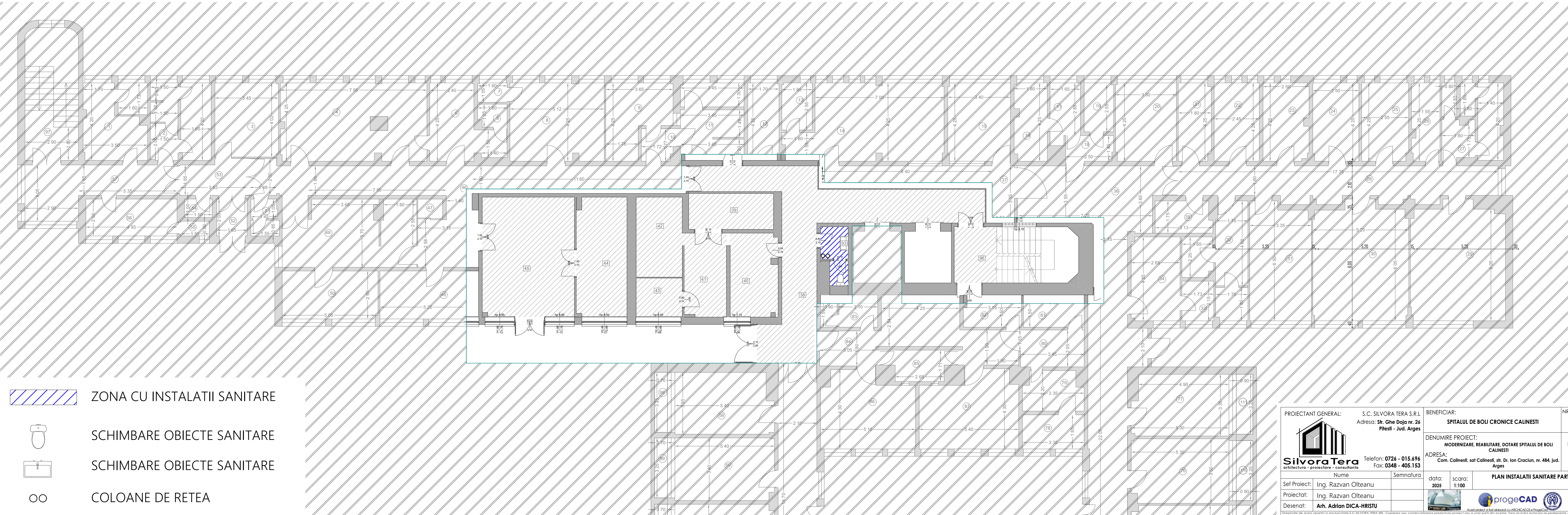






Nr. incapere	Denumire incapere	Suprafata utila (mp)
1	Sala tratament	13.8
2	Cabinet medical	12.9
3	Cabinet consultatii	13.9
4	Spitalizare de zi	32.7
5	Izolator	12.8
6	Grup sanitar	1.9
7	Grup sanitar	1.7
8	Ambulatoriu medicina interna	21.6
9	Vestiar	11.8
10	Hol	3.0
11	Grup sanitar	13.6
12	Magazie	7.2
13	Grup sanitar	4.2
14	Birou	32.1
15	Arhiva	14.4
16	Magazie	7.4
17	Magazie	5.1
18	Hol	3.6
19	Magazie	4.2
20	Salon	14.0
21	Cabinet asistente	7.5
22	Rezerva	10.4
23	Rezerva	10.4
24	Rezerva	10.6
25	Rezerva	10.8
26	Magazie	6.4
27	Grup sanitar	12.4
28	Hol	27.8
29	Kinetoterapie	31.7
30	Salon	32.0
31	Salon	21.0
32	Grup sanitar	15.1
33	Grup sanitar	3.7
34	Izolator	12.0
35	Magazie	5.2
36	Hol	148.3
37	Hol	18.6
38	Hol	51.0
39	Magazie	9.0
40	Farmacie	11.6
41	Farmacie	10.3
42	Magazie	11.2
43	Magazie	5.0
44	Farmacie	17.4
45	Receptie	32.5
46	Hol	46.6
47	Magazie	1.4
48	Cabinet spital judetean	13.5
49	Camera de garda	24.6
50	Cabinet	13.5
51	Grup sanitar	2.9
52	Hol	3.3
53	Hol	9.8

54	Debara	1.5
55	Grup sanitar	1.2
56	Cabinet asistent	9.9
57	Hol	17.7
58	Salon	17.4
59	Salon	18.2
60	Salon	18.5
61	Cabinet medical	7.3
62	Cabinet asistente	10.0
63	Birou asistenta sociala	7.1
64	Salon	17.2
65	Salon	27.6
66	Salon	18.5
67	Rezerva	12.8
68	Rezerva	13.3
69	Salon	17.7
70	Hol	3.6
71	Vestiar	19.8
72	Depozit	6.9
73	Salon	10.5
74	Bucatarie	7.5
75	Sala mese	17.7
76	Salon	18.3
77	Salon	17.1
78	Depozit	6.2
79	Depozit	6.6
80	Hol	6.9
81	Depozit	5.0
82	Depozit	4.6
83	Grup sanitar	4.6
84	Hol	22.8
85	Hol	5.9
86	Camera ecograf	19.8
87	Camera radiologie	20.9
88	Grup sanitar	5.8
89	Depozit	5.8
90	Rezerva	8.8
91	Grup sanitar	5.8
92	Grup sanitar	6.2
93	Grup sanitar	3.9
	Suprafata Utila = 1336.3 mp	
94	Casa lift	7.1
95	Casa lift	7.1
96	Casa scarii	20.3
97	Casa scarii	20.7
98	Balcon	2.3
99	Balcon	2.3
100	Balcon	2.3
101	Balcon	2.2
102	Balcon	3.0
103	Balcon	4.8
104	Balcon	3.2
105	Balcon	2.2
106	Balcon	2.2



PROIECTANT GENERAL:		S.C. SILVORA TERA S.R.L. Adresa: Str. Ghe Doja nr. 26 Pilești - Jud. Arges		BENEFICIAR:		NR. PROIECT: 700704	
 SilvoraTera arhitectura - proiectare - consultanta		Telefon: 0726 - 015.696 Fax: 0348 - 405.153		DENUMIRE PROIECT: MODERNIZARE, REABILITARE, DOTARE SPITALUL DE BOLI CALINESTI		FAZA D.A.I.I.	
				ADRESA: Com. Calinesti, sat Calinesti, str. Dr. Ion Craciun, nr. 484, jud. Arges		PLANSA ISO2	
Nume		Semnatura		data: 2025		scara: 1:100	
Sef Proiect: Ing. Razvan Olteanu				PLAN INSTALATII SANITARE PARTER			
Proiectat: Ing. Razvan Olteanu							
Desenat: Arh. Adrian DICA-HRISTU						 Acest proiect a fost elaborat cu ARHCAD25 si ProgeCAD	